



Market Report

Brentwood, CA

REPORT FOR 10/13/2020
Single-Family Homes

CHARTWELL
ESCROW

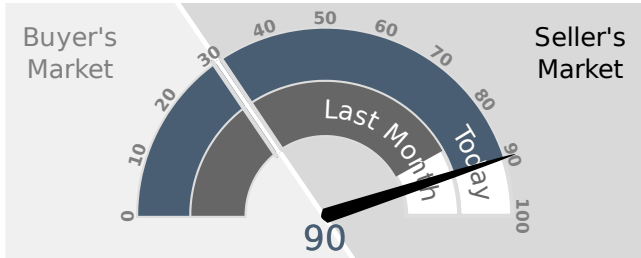
Presented by Zack Tenney
310-740-1708
ztenney@chartwellescrow.com

Beverly Hills • Brentwood • Calabasas • Hollywood • Malibu • Newport Beach • Old Town
Pasadena • Pasadena • Santa Monica • Seal Beach • Sherman Oaks • West Hollywood • Westlake
Village

This week the median list price for Brentwood, CA is \$788,811 with the market action index hovering around 90. This is an increase over last month's market action index of 84. Inventory has held steady at or around 87.

MARKET ACTION INDEX

This answers "How's the Market?" by comparing rate of sales versus inventory.



Strong Seller's Market

Home sales continue to outstrip supply and the Market Action Index has been moving higher for several weeks. This is a Seller's market so watch for upward pricing pressure in the near future if the trend continues.

REAL-TIME MARKET PROFILE

Median List Price		\$788,811
Per Square Foot		\$323
Days on Market		41
Price Decreased		22%
Price Increased		3%
Relisted		5%
Inventory		87
Median Rent		\$2,725
Most Expensive		\$2,495,000
Least Expensive		\$137,500
Market Action		90

Strong Seller's Market

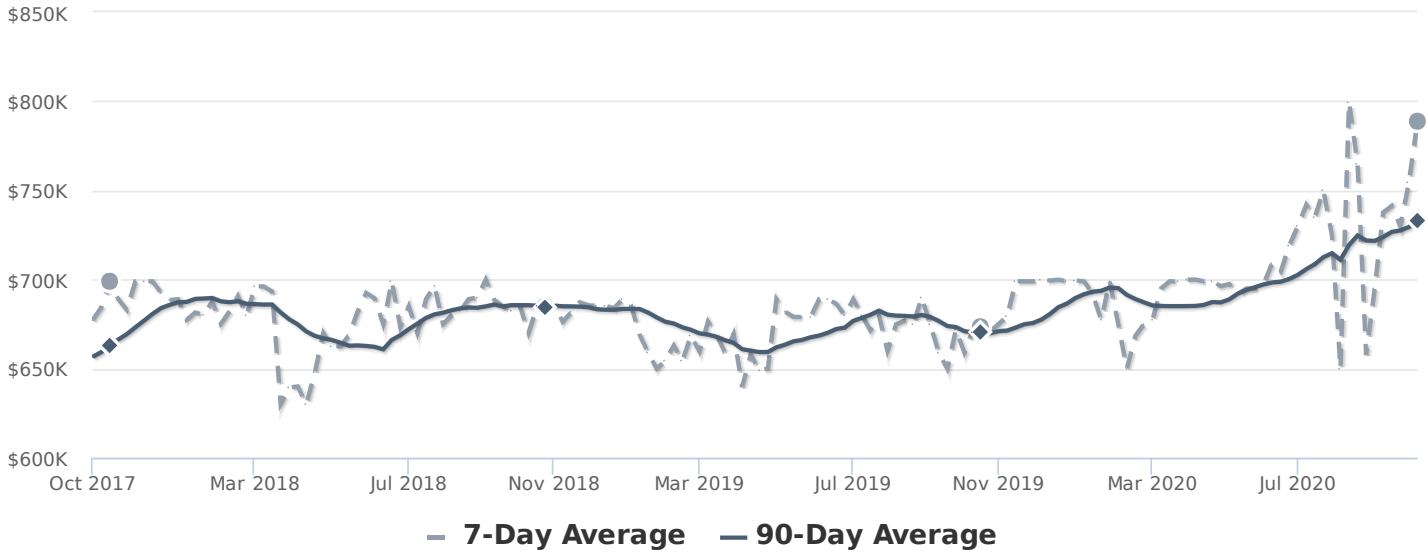
MARKET SEGMENTS

Each segment below represents approximately 25% of the market ordered by price.

Median Price	Sq. Ft.	Lot Size	Beds	Bath	Age	New	Absorbed	DOM
\$1,413,000	3,433	0.5 - 1 acre	4	3	19	4	1	71
\$872,000	2,834	8,000 - 10,000 sqft	4	2	15	4	3	30
\$724,950	2,355	6,500 - 8,000 sqft	3	2	16	11	9	23
\$536,750	1,779	4,500 - 6,500 sqft	3	2	24	8	9	40

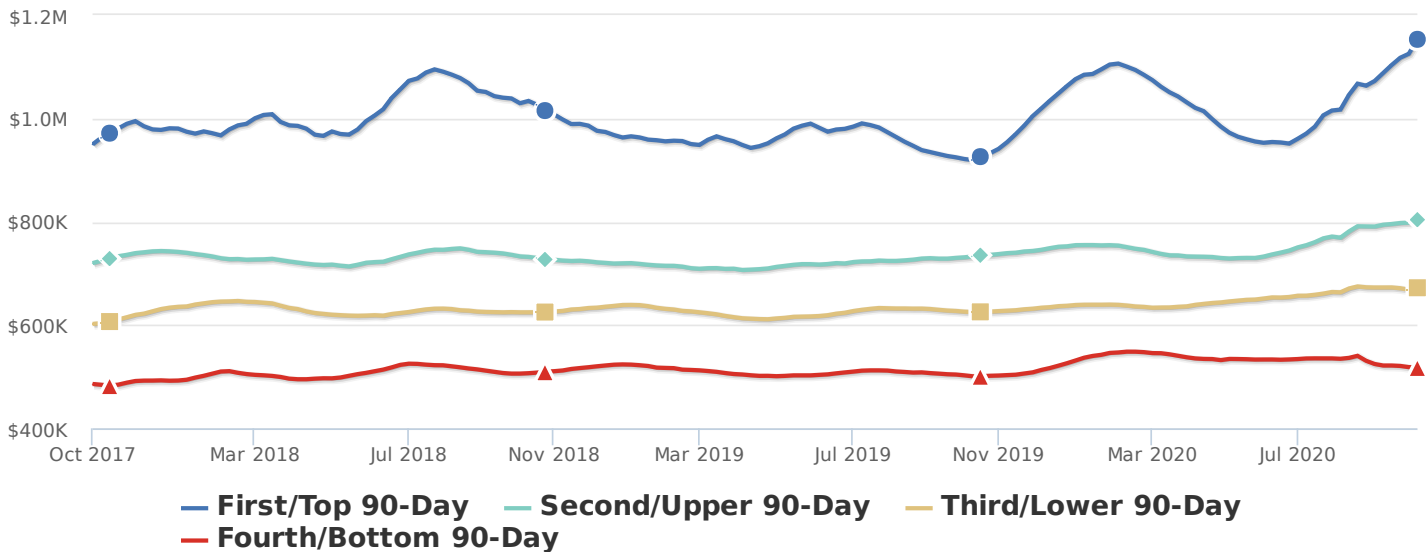
MEDIAN LIST PRICE

The market is hovering around this plateau. Look for a persistent change in the Market Action Index before we see prices deviate from these levels.



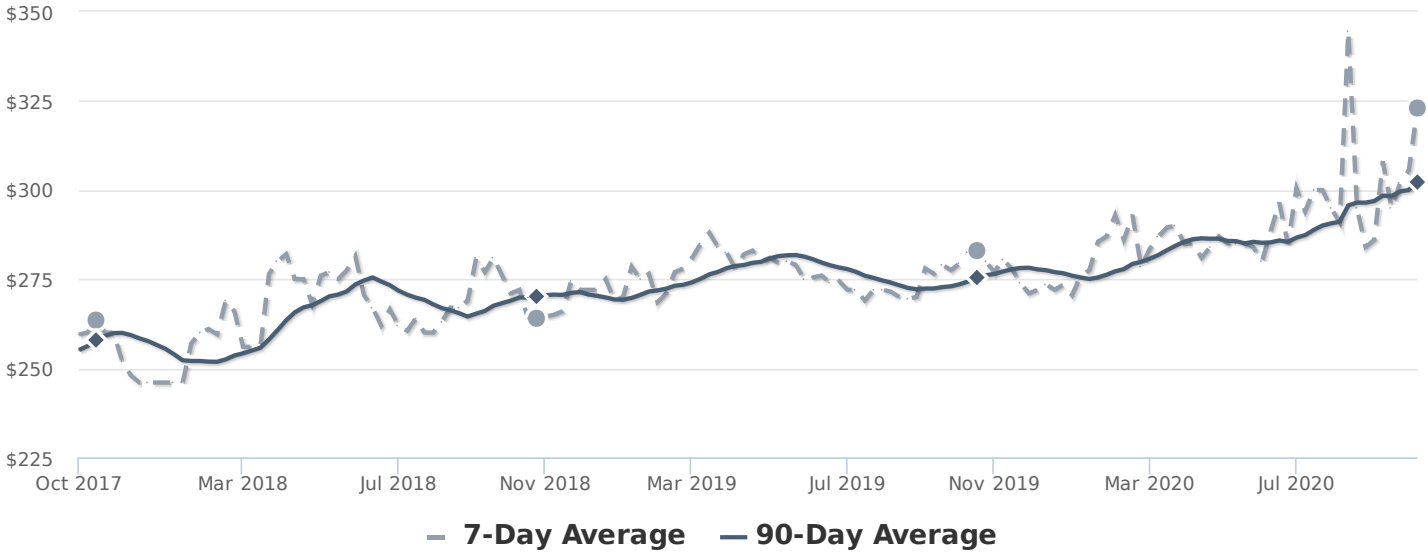
SEGMENTS

Prices have generally settled at a plateau, although Quartile 1 is on a bit of an up trend in recent weeks. We'll need to see a persistent shift in the Market Action Index before we see prices across the board move from these levels.



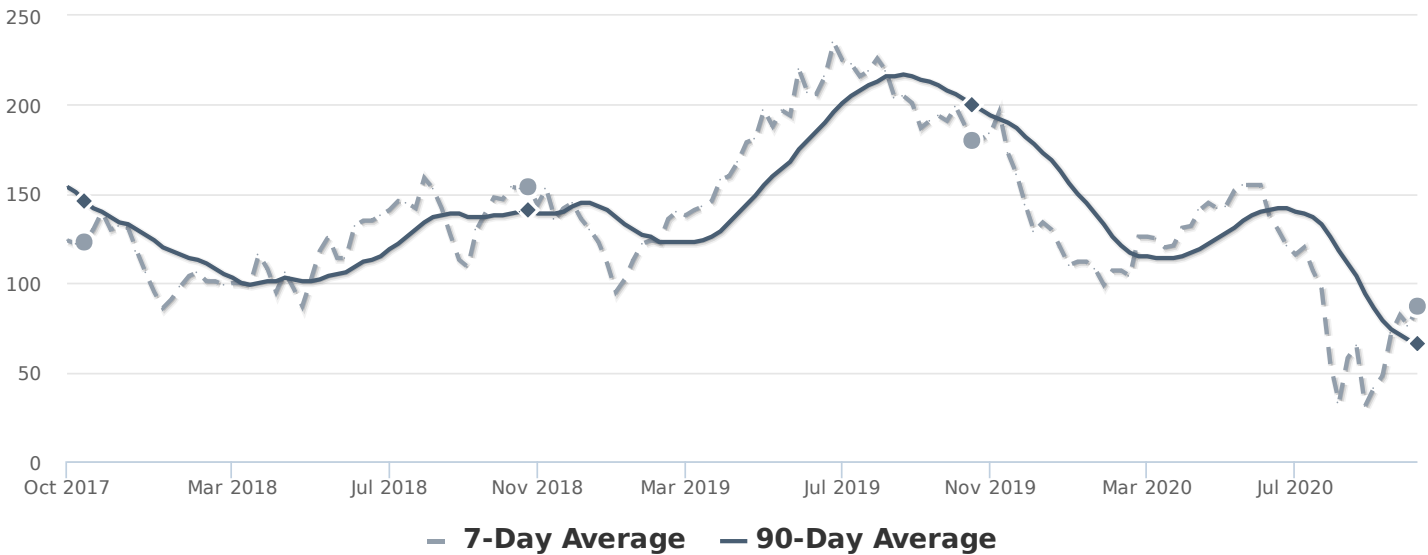
PRICE PER SQUARE FOOT

The market plateau is seen across the price and value. The price per square foot and median list price have both been reasonably stagnant. Watch the Market Action Index for persistent changes as a leading indicator before the market moves from these levels.



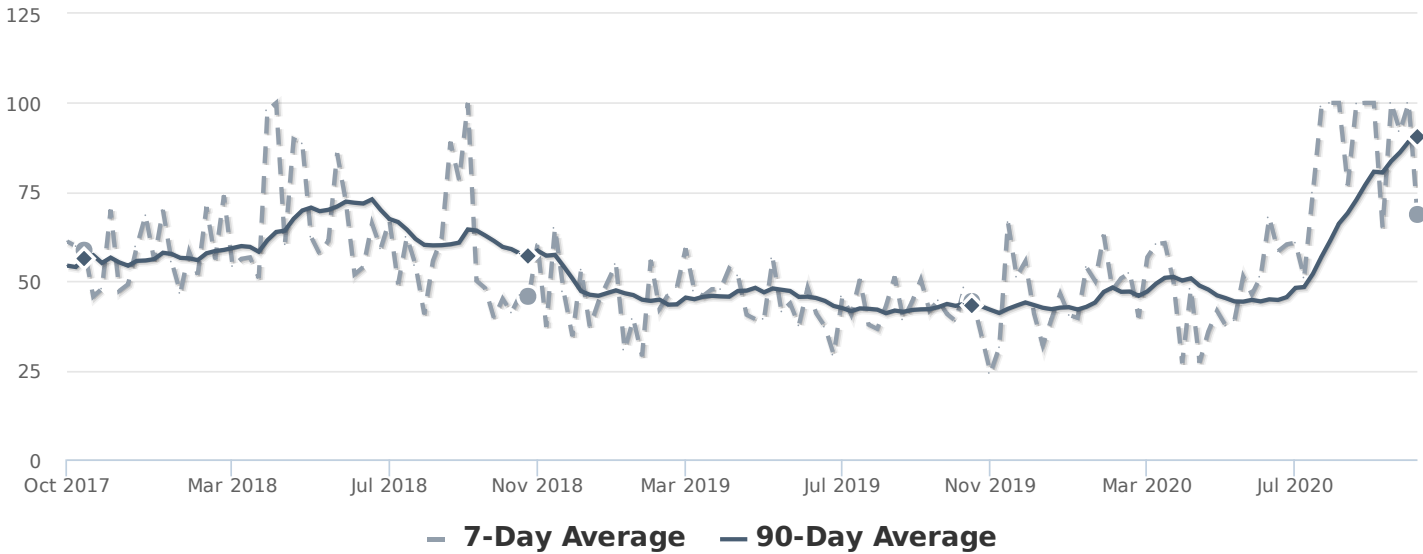
INVENTORY

Inventory has been falling in recent weeks. Note that declining inventory alone does not signal a strengthening market. Look to the Market Action Index and Days on Market trends to gauge whether buyer interest is changing with the available supply.



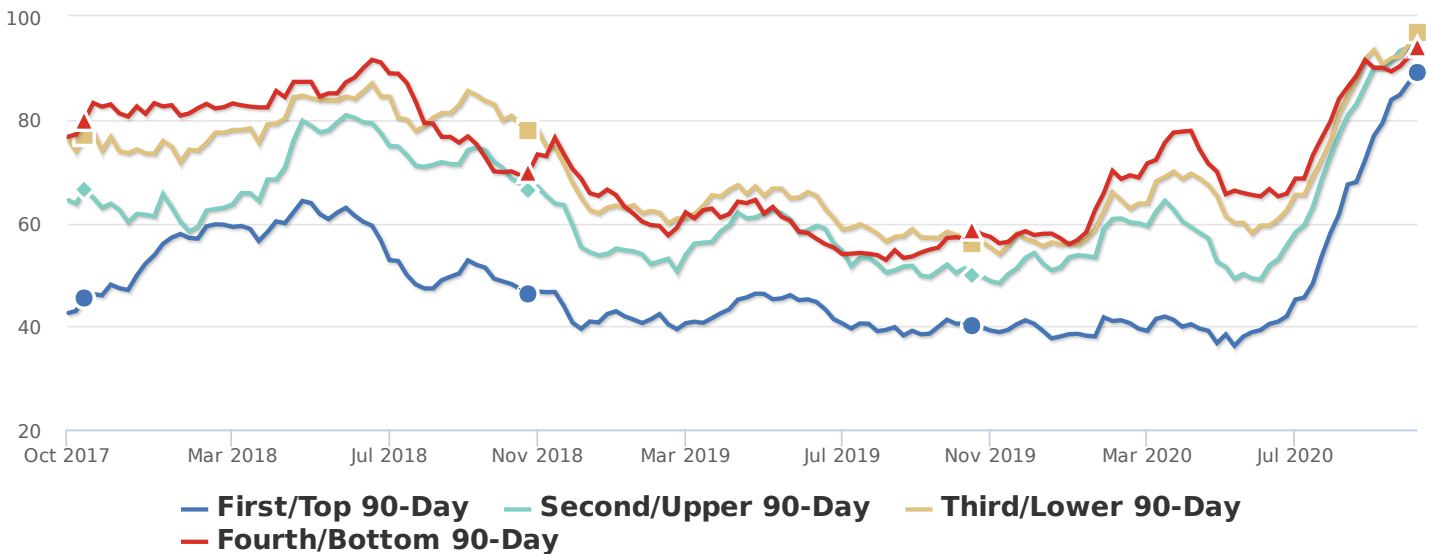
MARKET ACTION INDEX

Home sales continue to outstrip supply and the Market Action Index has been moving higher for several weeks. This is a Seller's market so watch for upward pricing pressure in the near future if the trend continues.



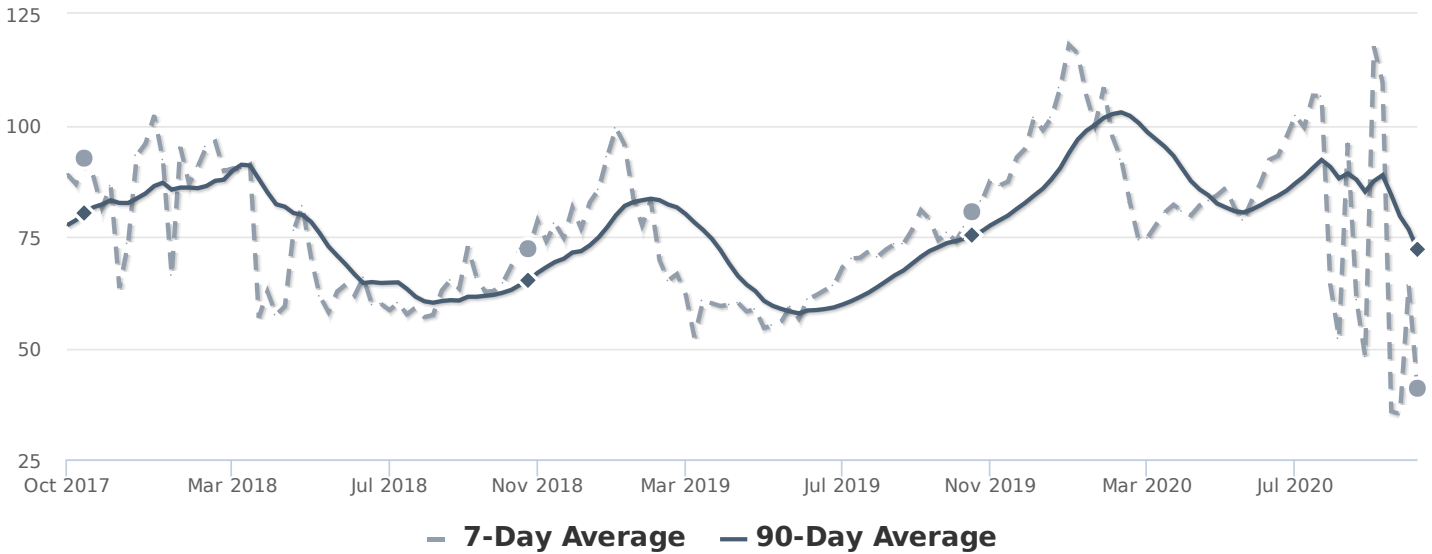
MARKET ACTION SEGMENTS

Not surprisingly, all segments in the market are showing high levels of demand. Watch the quartiles for changes before the whole market changes. Often one end of the market (e.g. the high-end) will weaken before the rest of the market and signal a slowdown for the whole group.



AVERAGE DAYS ON MARKET (DOM)

The properties have been on the market for an average of 72 days. Half of the listings have come newly on the market in the past 20 or so days. Watch the 90-day DOM trend for signals of a changing market.



SEGMENTS

It is not uncommon for the higher priced homes in an area to take longer to sell than those in the lower quartiles.

